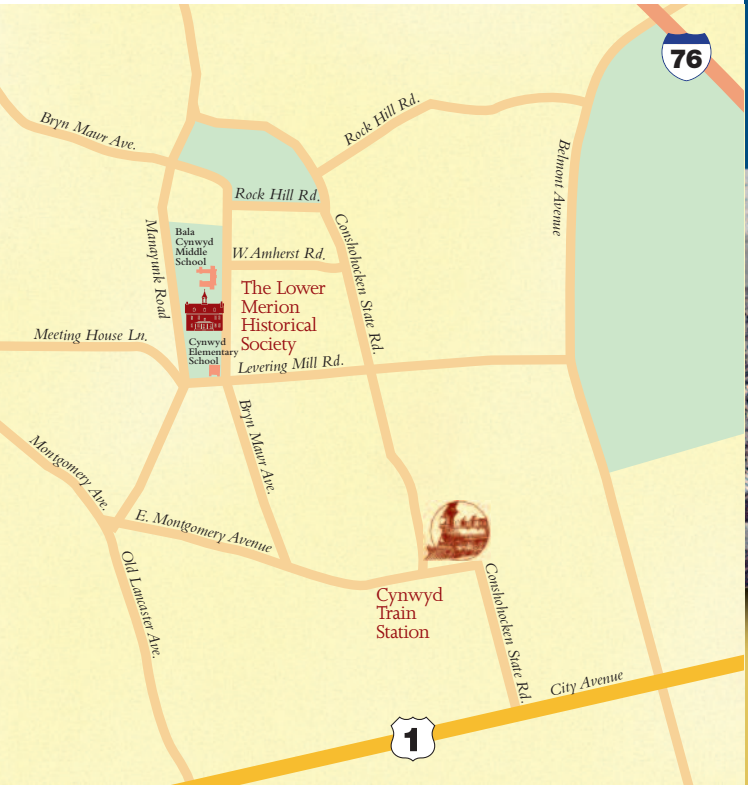




The Lower Merion Historical Society  
 Lower Merion Academy  
 506 Bryn Mawr Avenue  
 Box 2602  
 Bala Cynwyd, Pennsylvania 19004

The Academy is located between the Cynwyd Elementary School and the Bala Cynwyd Middle School



Phone: (610) 664-3216  
 E-mail Address: [LMHistory@comcast.net](mailto:LMHistory@comcast.net)

[LowerMerionHistory.org](http://LowerMerionHistory.org)  
[CynwydHeritageTrail.com](http://CynwydHeritageTrail.com)

The Lower Merion Historical Society is an all-volunteer organization dedicated to Preserving Our Past For The Future. For more than 60 years we have accomplished this by stewardship of local history, education of the community, preservation of historic resources and outreach to promote awareness of the cultural heritage of the Township of Lower Merion and the Borough of Narberth.

Among our many accomplishments, we have preserved the mile markers that map our region's relationship with Philadelphia, and we have restored the 1812 Lower Merion Academy building, which is now in active use as the Society's headquarters. We also published *The First 300: The Amazing and Rich History of Lower Merion*, a publication that is the reference book of choice for local history.

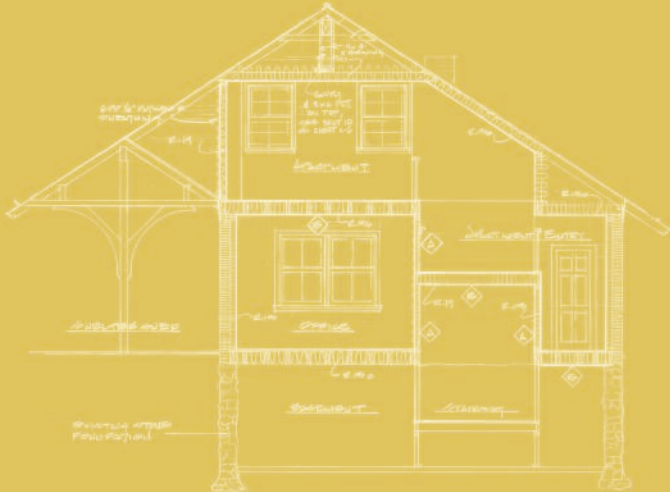
The official registration and financial information of The Lower Merion Historical Society may be obtained from the Pennsylvania Department of State by calling toll-free within Pennsylvania: 1-800-732-0999. Registration does not imply endorsement.



# All Aboard... Cynwyd Train Station REVITALIZATION



Get on board with the Lower Merion Historical Society for the restoration and revitalization of the keystone of our local transportation history...  
**The Cynwyd Train Station.**

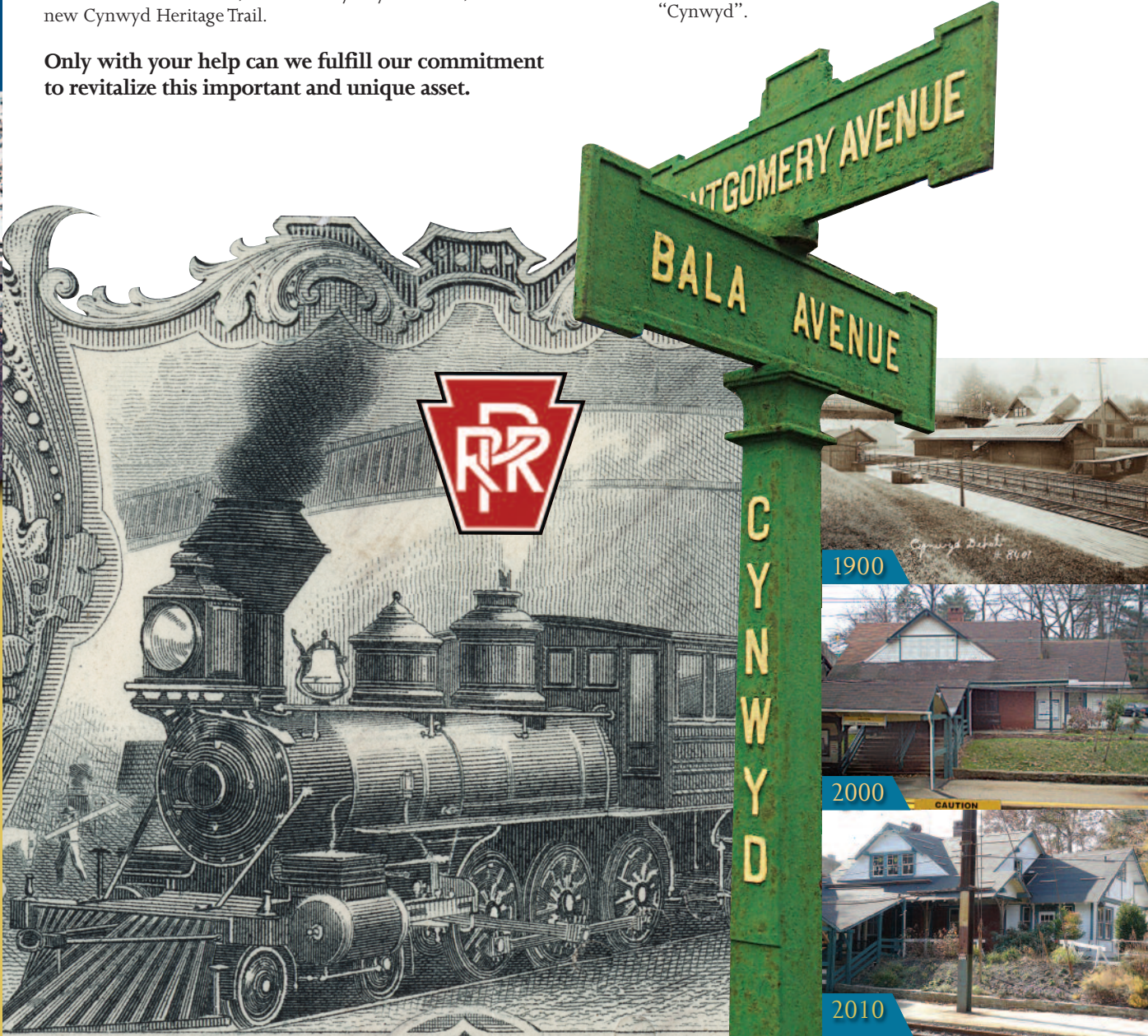


A key Bala Cynwyd landmark since its construction in 1890, the Cynwyd Train Station is one of the last remaining original Pennsylvania Railroad stations in the region, and an important piece of vernacular architecture that is a testament to Lower Merion's industrial roots.

Our preservation efforts are based on a creative collaboration between the Lower Merion Historical Society, Lower Merion Township, SEPTA, Montgomery County, Broadlands Financial Group, and Stumpo Construction. Our goal is to successfully transform the station from a dilapidated, termite-damaged, oft-vandalized drug house, to a beautifully restored "green" community center that will serve as the gateway to the Bala Avenue Business District, the active Cynwyd rail line, and the new Cynwyd Heritage Trail.

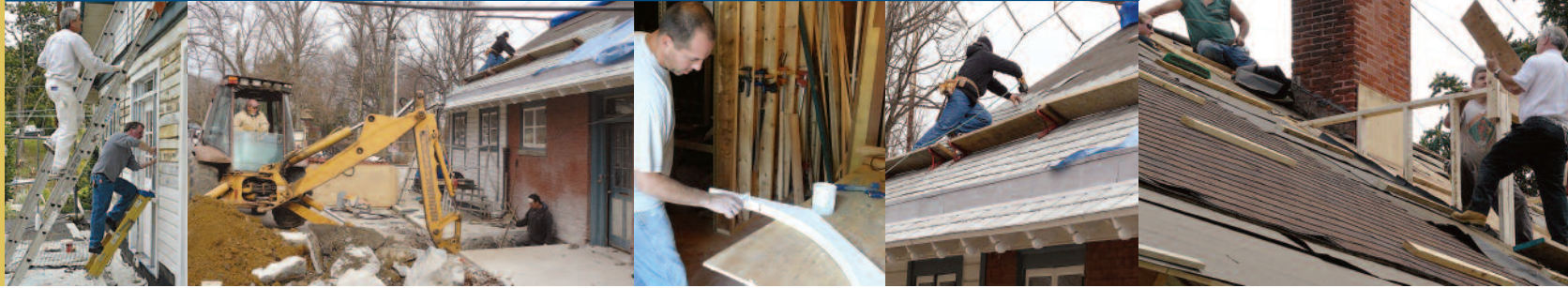
**Only with your help can we fulfill our commitment to revitalize this important and unique asset.**

One hundred and twenty years ago, Lower Merion was still predominately a rural community. The construction of rail service for both passenger and freight served as the major catalyst for rapid residential and industrial development. Within five years of the construction of the Cynwyd Train station, the area was so developed that its transformation to a suburban community was considered complete. Train stations, as first post offices and hubs of transportation and economic activity, were so influential that entire neighborhoods were renamed to match those of the stations: "Pencoyd" became "Bala", and "Academyville" became "Cynwyd".



# CYNWYD TRAIN STATION REVITALIZATION

The commitment of the Society and our partners to incorporate "green" strategies exemplifies not only our stewardship of historical preservation, but also of the environment and the health of the community. We view it as a kind of experiment for making the station more relevant today. This endeavor also shows how a renovation project can be "green" on a tiny budget.



**YOU CAN BRING THE CYNWYD TRAIN STATION BACK TO LIFE!**

## Reused, Recycled, and Salvaged Materials:

- Reused 35% to 40% of the original old growth, full cut, hemlock fir lumber.
- Replaced missing fieldstone in the foundation walls with locally collected fieldstone.
- Used scrap wood lumber for the roof canopy and overhangs.
- Installed roofing shingles recovered from demolition project.
- Faux slate roofing shingles also made from 100% recycled polymers.

## Energy Efficiency:

- Re-scribed original first floor window frames to accept double pane glass for increased energy efficiency.
- Added a second floor dormer for additional daylighting to reduce the need for artificial lighting, artificial cooling in the summer, and heating in the winter.
- Installed a new energy efficient heat pump for the second floor area.
- Installed new energy efficient first floor doors and second floor windows.

## Indoor Air Quality:

- Removed asbestos and lead paint and tested for other hazardous deposits.
- Used biodegradable non-toxic paint remover.

## For future work, we plan to continue strategies that would improve stormwater management, indoor air quality, and energy and water conservation:

- Low-VOC paints and sealants in the interior surfaces.
- Incorporate rain barrels and rain gardens to support sustainable stormwater management and reduce water usage for irrigation.
- Install water efficient fixtures in all three bathrooms.
- Tenant leases will require the use of only Energy Star certified appliances.



We have already brought the long-neglected building back from the brink of collapse to become the crown jewel in the collection of other historical industrial sites along the **Cynwyd Heritage Trail** - a future two-mile multi-use recreational corridor and linear park. As the major trailhead and access point to the trail, the Cynwyd Station is an integral part in this larger civic project to restore and reclaim damaged industrial lands and connect communities to one another.

## But we need your help to finish the job.

### Your donations will go directly to the funding of projects such as:

- Installation of the Faux Slate Roof Shingles
- Installation of the Copper Pole Gutters
- Re-Fabrication and Installation of the Roof Crests
- Rebuilding of the Station Roof Canopy
- Rebuilding of the Decorative Exterior Elements
- Repairing/Replacing of the Spalled Brick Walls
- Exterior Painting using 1910 PRR Colors
- Restoration of the original 1890 Double Front Doors
- Restoration of the 1910 Waiting Room Benches
- Waterproofing the Basement Area
- Stormwater Drainage Around the Building
- Rain Barrels for Rainwater Harvesting
- Rain Garden Landscaping
- Exterior Lighting
- Repurposing the First Floor Area as a trailhead for the Cynwyd Heritage Trail

Your contribution also helps the Society to obtain grants, which often require matching funds, and corporate donations to help complete the work.

- |   |  |
|---|--|
| <input type="checkbox"/> <b>\$10,000+</b> : PRR President | <input type="checkbox"/> <b>\$5,000</b> : Train Conductor  |
| <input type="checkbox"/> <b>\$2,500</b> : Train Engineer  | <input type="checkbox"/> <b>\$1,000</b> : Station Master   |
| <input type="checkbox"/> <b>\$500</b> : Fireman           | <input type="checkbox"/> <b>\$250</b> : Brakeman   |
| <input type="checkbox"/> <b>\$50</b> : Freight Agent      | <input type="checkbox"/> <b>\$120</b> : Flagman<br>(One Dollar for every year since the station was built) |
| <input type="checkbox"/> <b>Other:</b> _____              |  |

Name \_\_\_\_\_  
 Address \_\_\_\_\_  
 City \_\_\_\_\_ State \_\_\_\_\_ Zip \_\_\_\_\_  
 Telephone \_\_\_\_\_  
 Email \_\_\_\_\_

The Society is a 501(c)(3) corporation, making your donation tax-deductible.

### Your check should be made payable to:

The Lower Merion Historical Society  
 P.O. Box 2602  
 Bala Cynwyd, PA 19004

### Memorial Plaques

Any person or group donating **\$120.00 or more** to the Cynwyd Train Station project can have their name added to a memorial plaque that will be installed at the station. All contributors will also be recognized in our biannual newsletter, Milestones.

Wording on plaques is limited to three lines. Please complete and detach this part of the form and mail it with your donation. Use the lines for the words on your plaque.

### PLEASE PRINT

Line 1 \_\_\_\_\_  
 Line 2 \_\_\_\_\_  
 Line 3 \_\_\_\_\_

